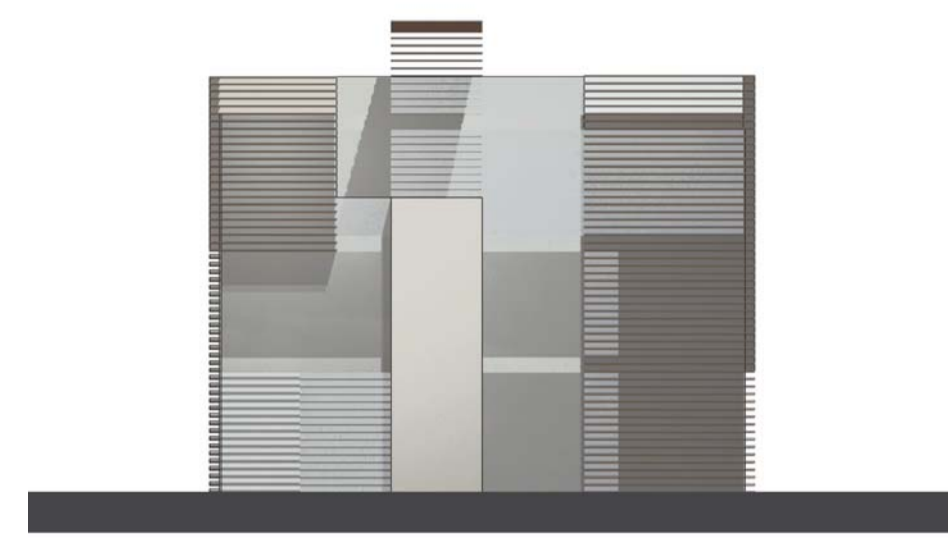
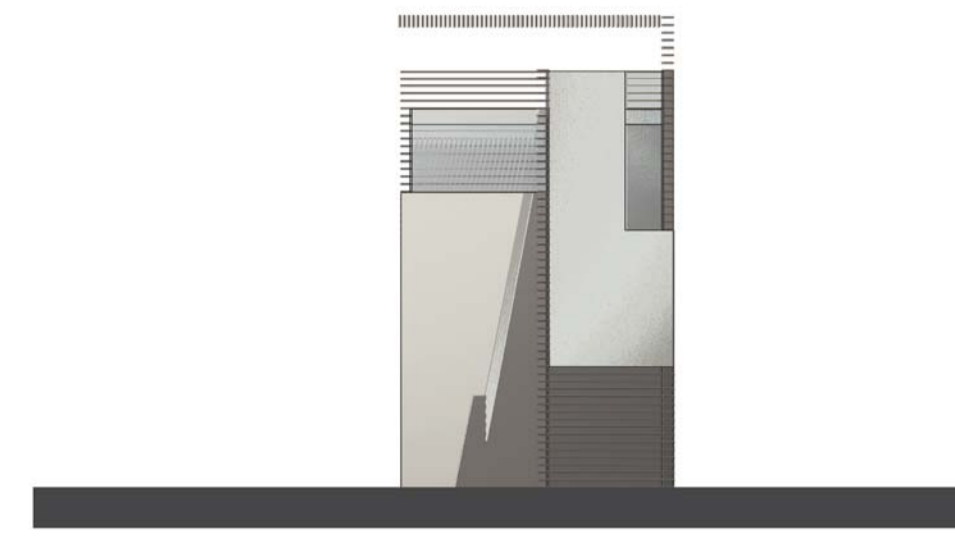


KEY PLAN_VILA A2



A



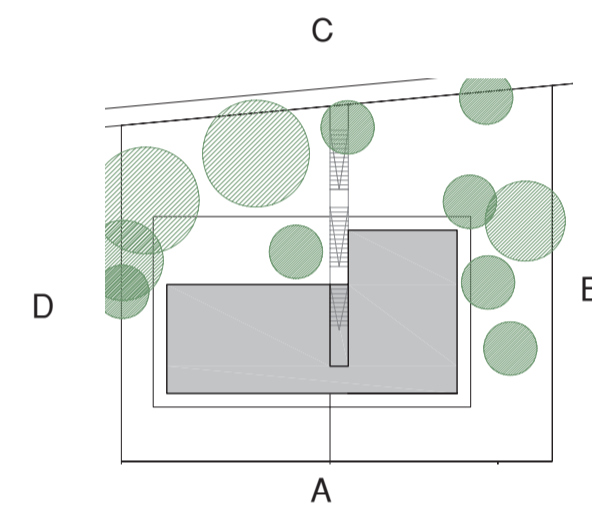
B



C



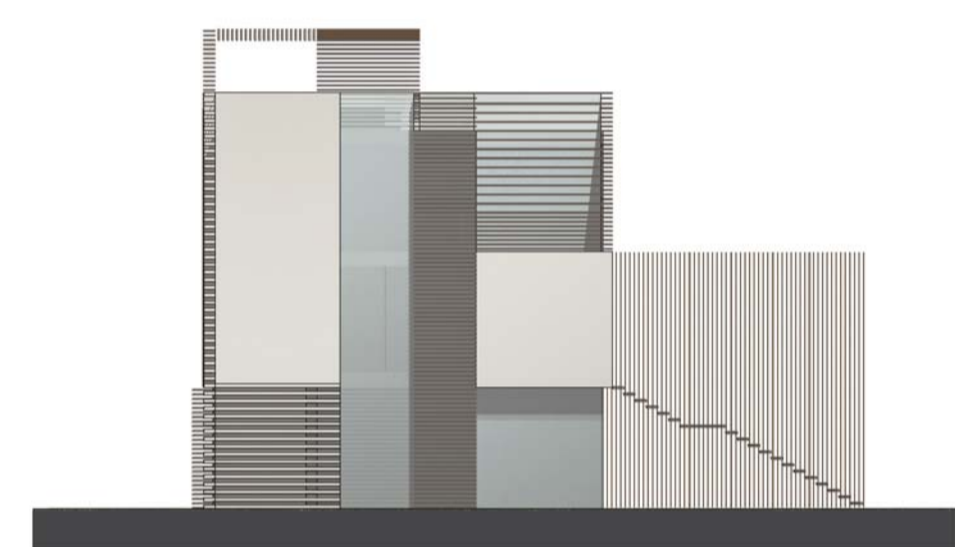
D



KEY PLAN_VILA B2



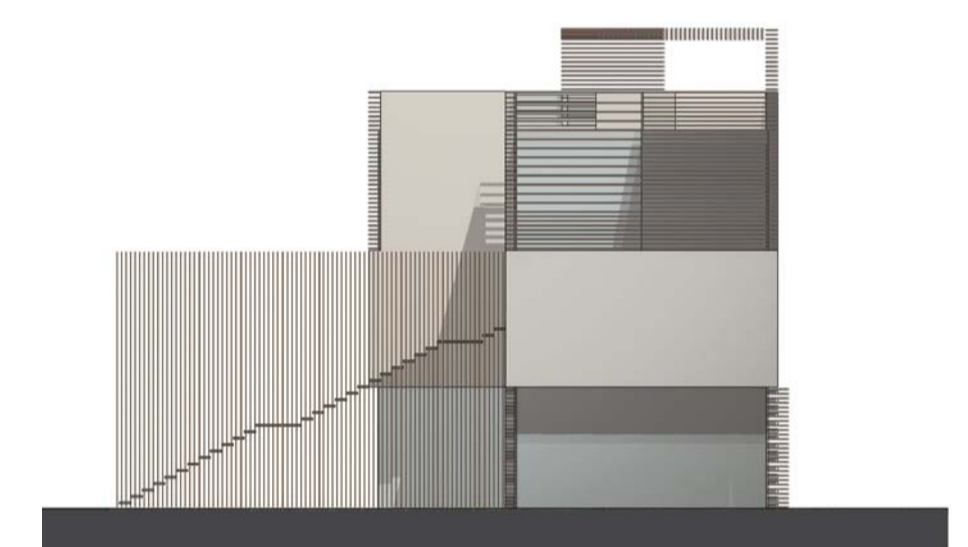
A



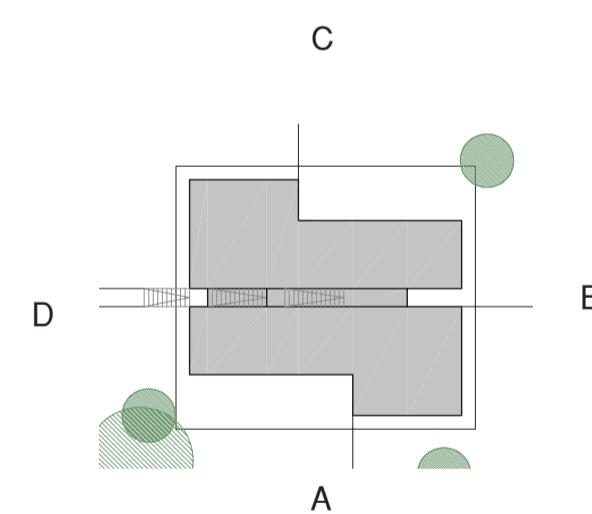
B



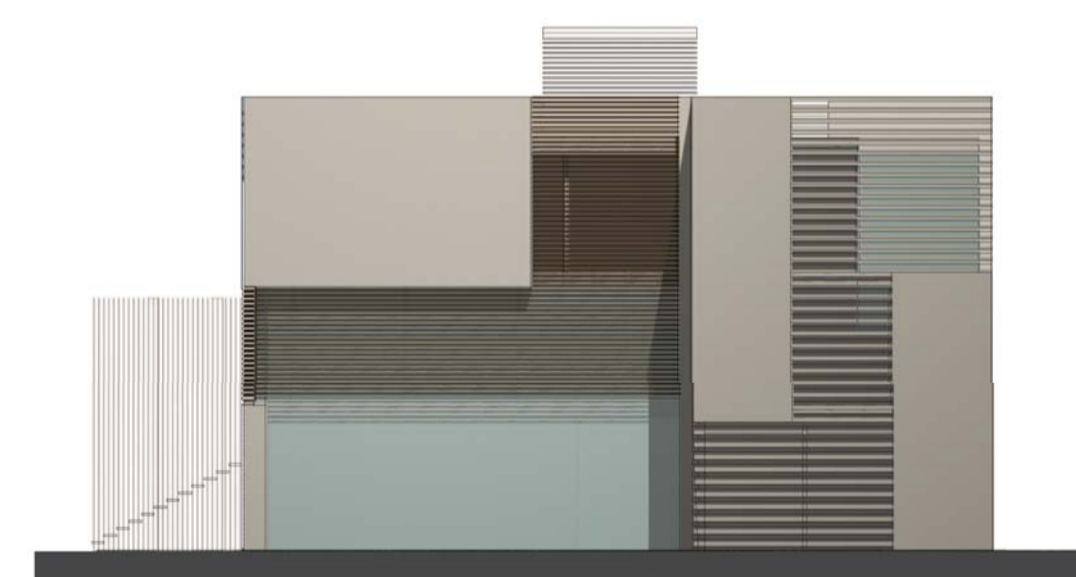
C



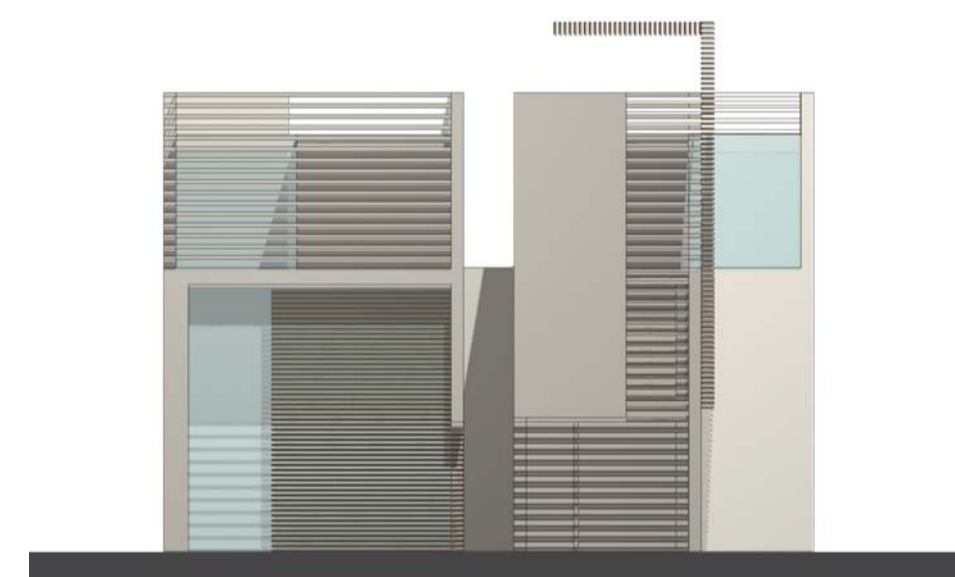
D



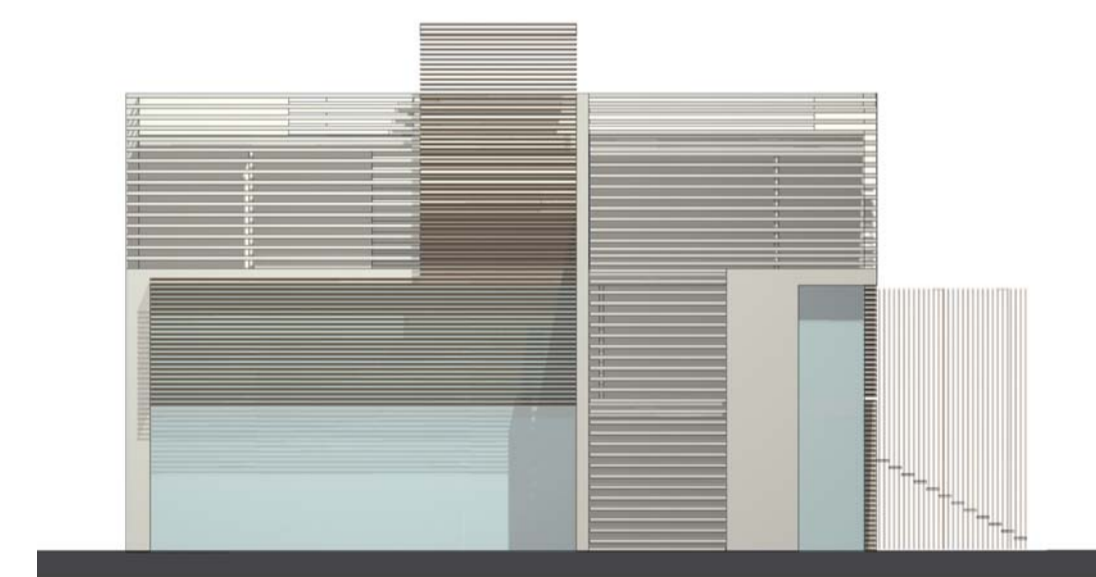
KEY PLAN_VILA C3



A



B



C



D

SHKALLA 1:200
SCALA 1:200
0 5m 20m

| | |
|---|---|
| POROSITESI: DUDAJ KONSTRUKSION ADRESA: PARCELA NR.4 GJIRI LALZIT KOMITENTE: DUDAJ KONSTRUKSION LOCALIZZAZIONE: LOTTO NR.4 GJIRI LALZIT | |
| INVESTITORI: Besnik DUDAJ INVESTITORE: Besnik DUDAJ | |
| KOMPLEKS TURISTIK, PARCELA 4 COMPLESSO TURISTICO, LOTTO 4 | |
| ARKITEKT: ARCHITETTO: Rossana ATENA |  |
| ARKITEKT: ARCHITETTO: Marco SARDELLA |  |
| ARKITEKT: ARCHITETTO: Anita PAPAJANI A.0881 | |
| EMERTIMI I FLETES: PASQYRA VILA - SCALA 1:200 | FLETA TAV. 09 |
| OGGETTO DELLA TAVOLA: PROSPETTO VILLE - SCALA 1:200 | DATA 12.2007 |