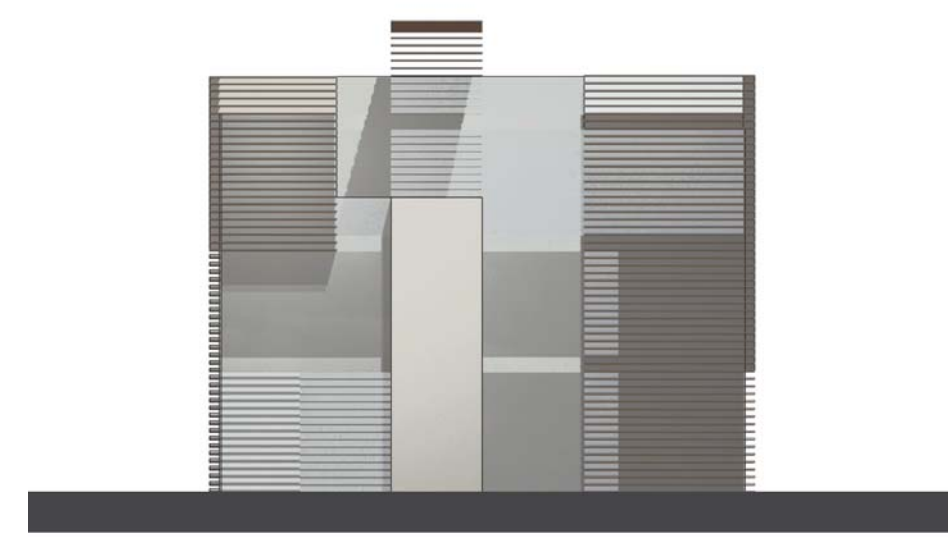
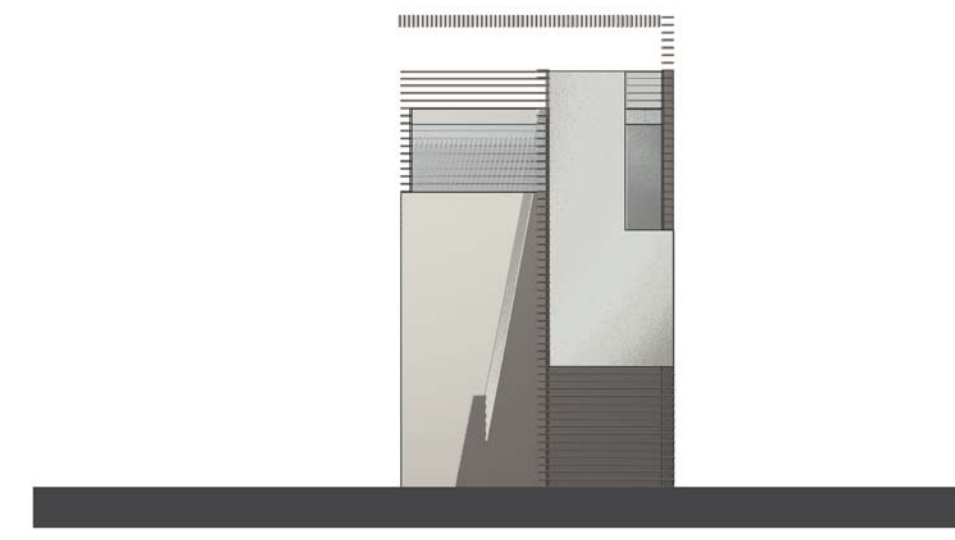


KEY PLAN\_VILA A2



A



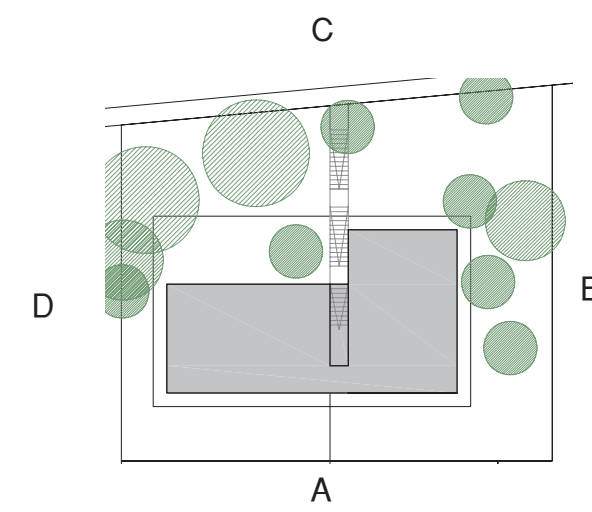
B



C



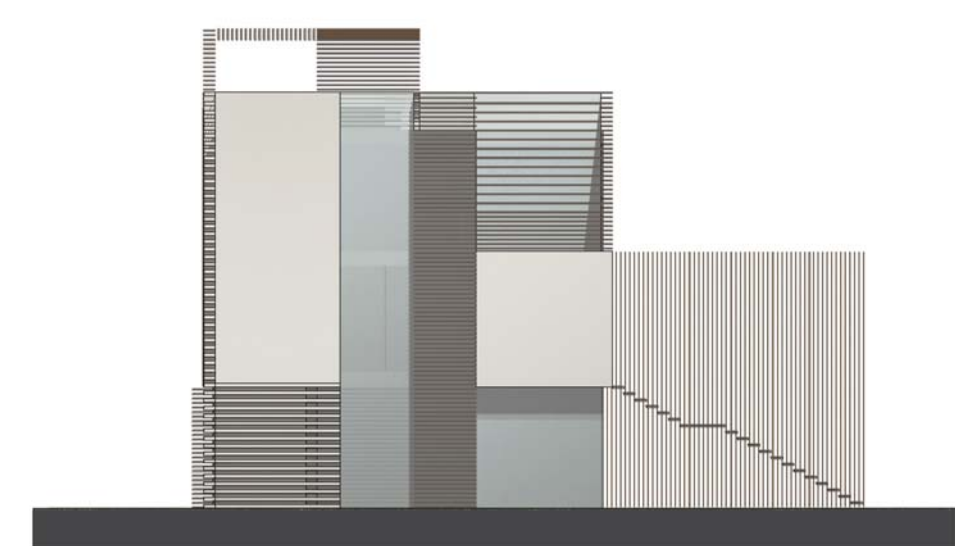
D



KEY PLAN\_VILA B2



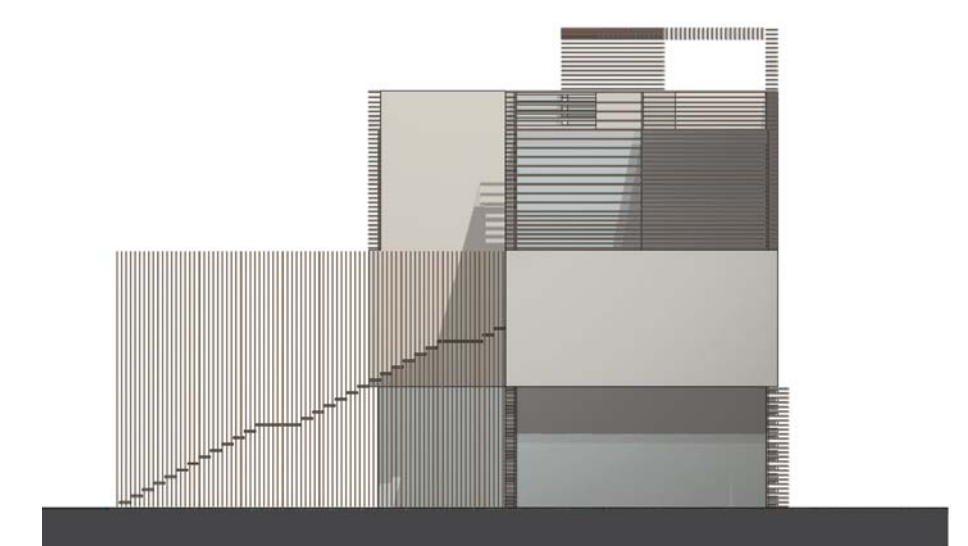
A



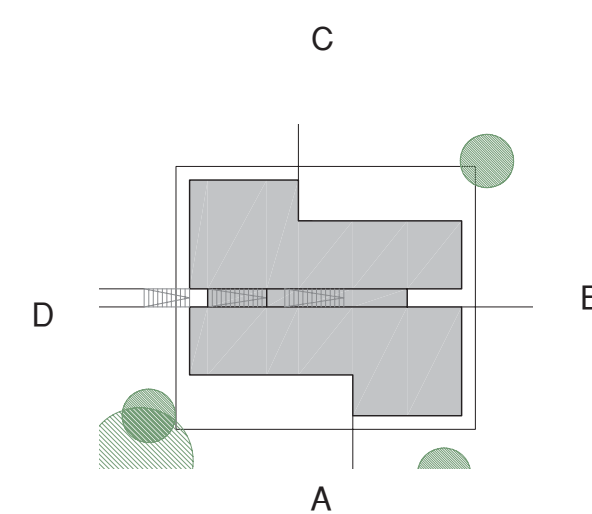
B



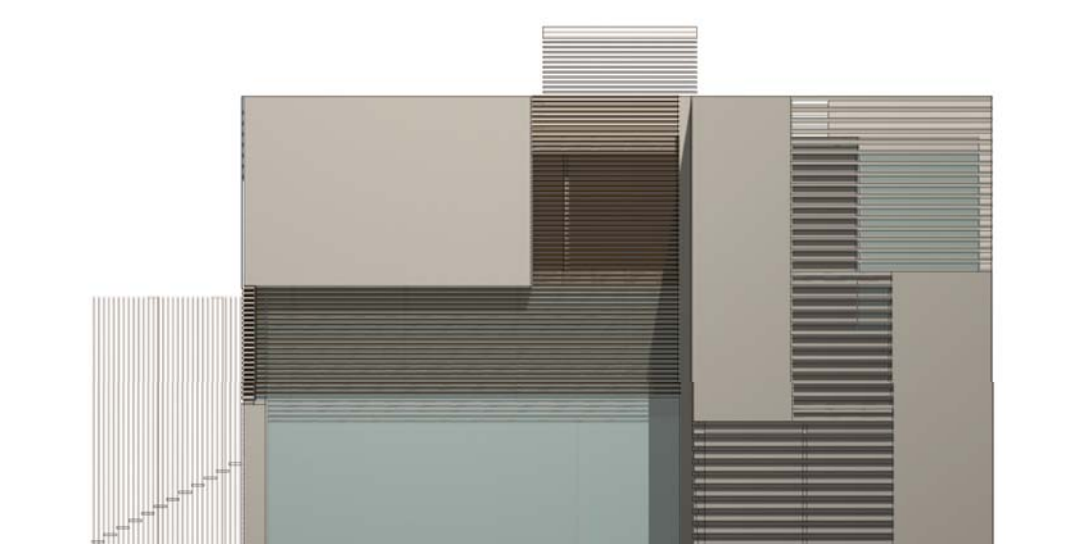
C



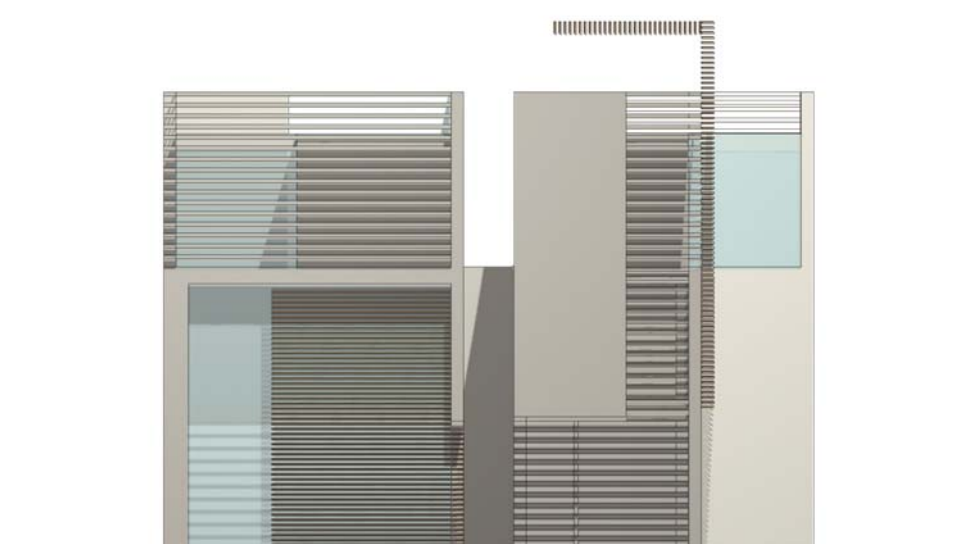
D



KEY PLAN\_VILA C3



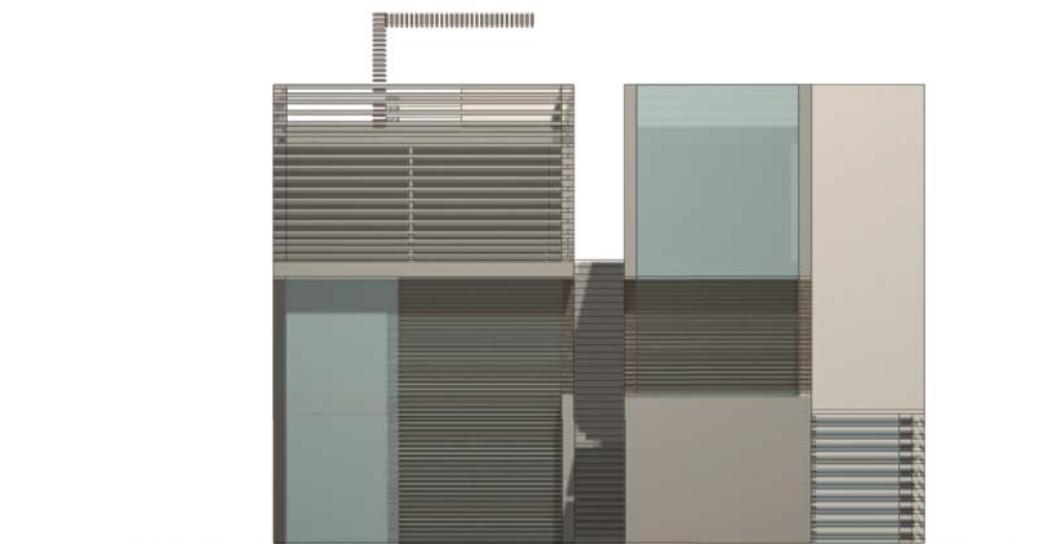
A



B



C



D

SHKALLA 1:200  
SCALA 1:200  
0 5 m 20 m

POROSITESI: DUDAJ KONSTRUKSION ADRESA: PARCELA NR.4 GJIRI LALZIT KOMITENTE: DUDAJ KONSTRUKSION LOCALIZZAZIONE: LOTTO NR.4 GJIRI LALZIT	
INVESTITORI: Besnik DUDAJ INVESTITORE: Besnik DUDAJ	
KOMPLEKS TURISTIK, PARCELA 4 COMPLESSO TURISTICO, LOTTO 4	
ARKITEKT: ARCHITETTO: Rossana ATENA	
ARKITEKT: ARCHITETTO: Marco SARDELLA	
ARKITEKT: ARCHITETTO: Anita PAPAJANI A.0881	
EMERTIMI I FLETES: RENDERING VILA - SCALA 1:200	FLETA TAV. 11
OGGETTO DELLA TAVOLA: RENDERING VILLE - SCALA 1:200	DATA 11.2007